

ALL DIMENSIONS MUST BE VERIFIED BY CONTRACTOR  
 DISCREPANCIES BEFORE PROCEEDING WITH WORK

*Old School* 4/16/20

**CEDAR CREEK HIGH SCHOOL SOLAR ARRAY SYSTEM**  
 1701 NEW YORK AVENUE  
 EGG HARBOR TOWNSHIP, ATLANTIC COUNTY, NEW JERSEY

**LIGHTING PLAN**  
 PFISTER ENERGY, INC.  
 57 GROFFEE ROAD  
 HARTFORD, NJ 07636

PROJECT PFIST20002  
 DATE 2020-04-16  
 DRAWING SCALE 1"= 40'  
 DRAWN BY MT  
 APPROVED BY CG

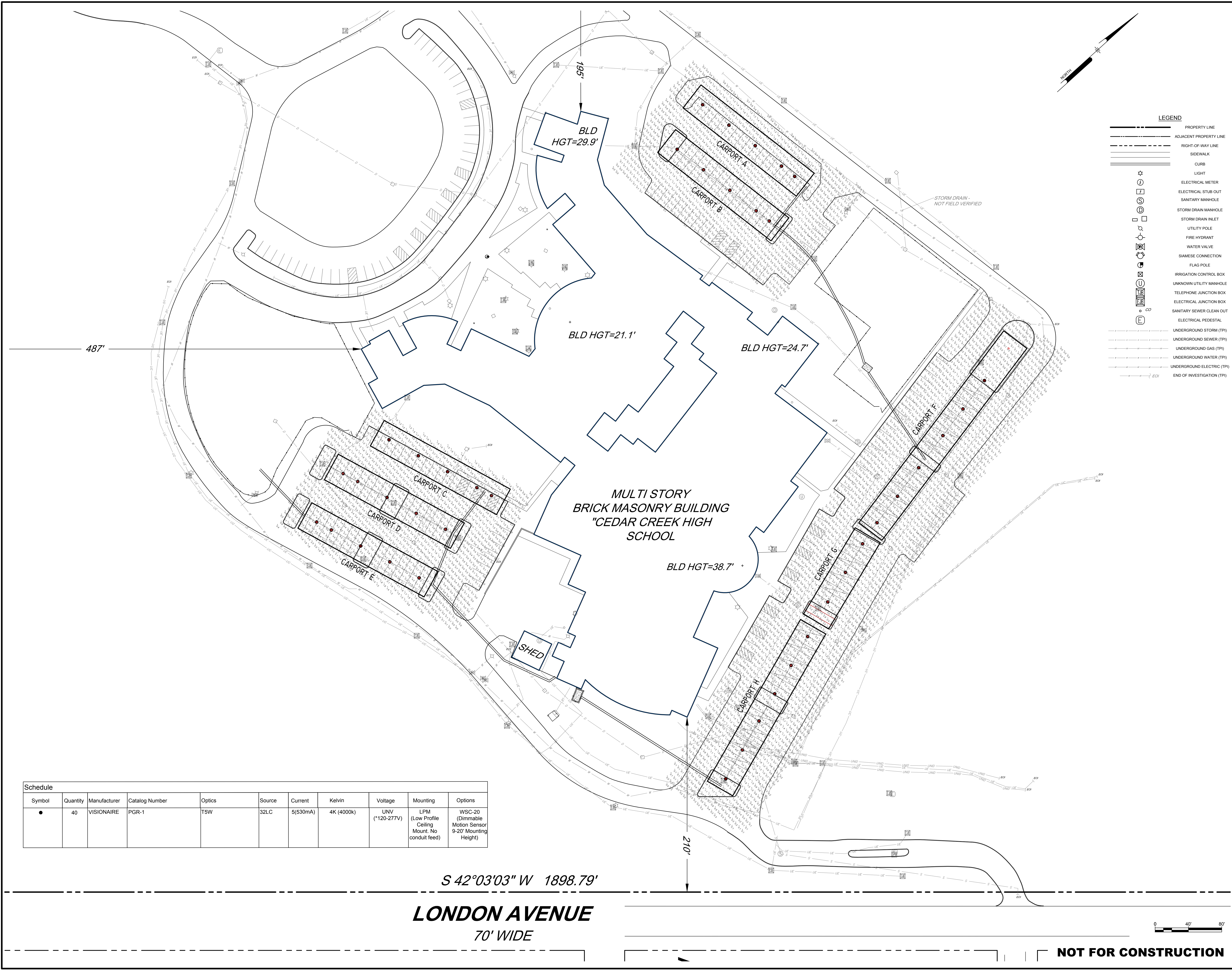
NO.	DATE	REVISIONS	BY

NO.	DATE	REVISIONS	BY

ALL DOCUMENTS PREPARED BY PENNONI ASSOCIATES ARE INSTRUMENTS OF SERVICE IN RESPECT OF THE PROJECT. THEY ARE NOT INTENDED OR REPRESENTED TO BE INSTALLED FOR REUSE BY OWNER OR OTHERS ON THE EXISTING OR PROPOSED PROJECT OR ANY OTHER PROJECT. ANY REUSE WITHOUT WRITTEN VERIFICATION OR ASSUMPTION BY PENNONI ASSOCIATES FOR THE SPECIFIC PURPOSE INTENDED WILL BE AT OWNERS SOLE RISK AND WITHOUT LIABILITY OR EXPOSURE TO PENNONI ASSOCIATES, AND OWNER SHALL INSTANTLY AND HOLD HARMLESS PENNONI ASSOCIATES FROM ALL CLAIMS, DAMAGES, LOSSES AND EXPENSES ARISING OUT OF OR RESULTING THEREFROM.

PROJECT PFIST20002  
 DATE 2020-04-16  
 DRAWING SCALE 1"= 40'  
 DRAWN BY MT  
 APPROVED BY CG

**CS2001**  
 SHEET 2 OF 3



Symbol	Quantity	Manufacturer	Catalog Number	Optics	Source	Current	Kelvin	Voltage	Mounting	Options
●	40	VISIONAIRE	PGR-1	T5W	32LC	5(530mA)	4K (4000K)	UNV (*120-277V)	LPM (Low Profile Ceiling Mount. No conduit feed)	WSC-20 (Dimmable Motion Sensor 9-20' Mounting Height)

S 42°03'03" W 1898.79'  
**LONDON AVENUE**  
 70' WIDE

**NOT FOR CONSTRUCTION**

I:\Users\PFISTER\Documents\Cedar Creek High School Solar Array System\_Schedule20200416.dwg  
 PLOTTER: HP DesignJet 5000 Series  
 PLOTTER: 4/16/2020 10:51 AM BY: Michael P. Pfister  
 PROJECT STATUS: -